

## BOATLANES

**HUMMINBIRD INSTALLATION INSTRUCTIONS** *\*IMPORTANT NOTE: These screen shots are not necessarily of the lake you have purchased...they are just for loading instructional purposes only...your map will look different depending on the BOATLANES product you purchased!\**

WEBSITE: [WWW.BOATLANES.COM](http://WWW.BOATLANES.COM)

Your HB unit will need to obtain GPS location or you will need to boot your HB unit into Full-Simulator to have access to full navigation functions.

If your HB unit has view of sky and can obtain a GPS location lock, you can **skip Booting Into Full Simulator-Mode** and proceed to **Changing Saved Tracks Defaults**.

If your HB unit's location does not have view of sky and cannot obtain a GPS location lock, you can optionally boot your unit into FULL-SIMULATOR mode:

### BOOTING INTO FULL-SIMULATOR MODE:

1. Press Power-Key to power your HB unit.  
**Press MENU-KEY FOR START-UP OPTIONS while on START-UP SCREEN**
2. Available selections will be:
  - Normal
  - Simulator
  - DiagnosticsUse Arrow-keys to select and start **Simulator**.

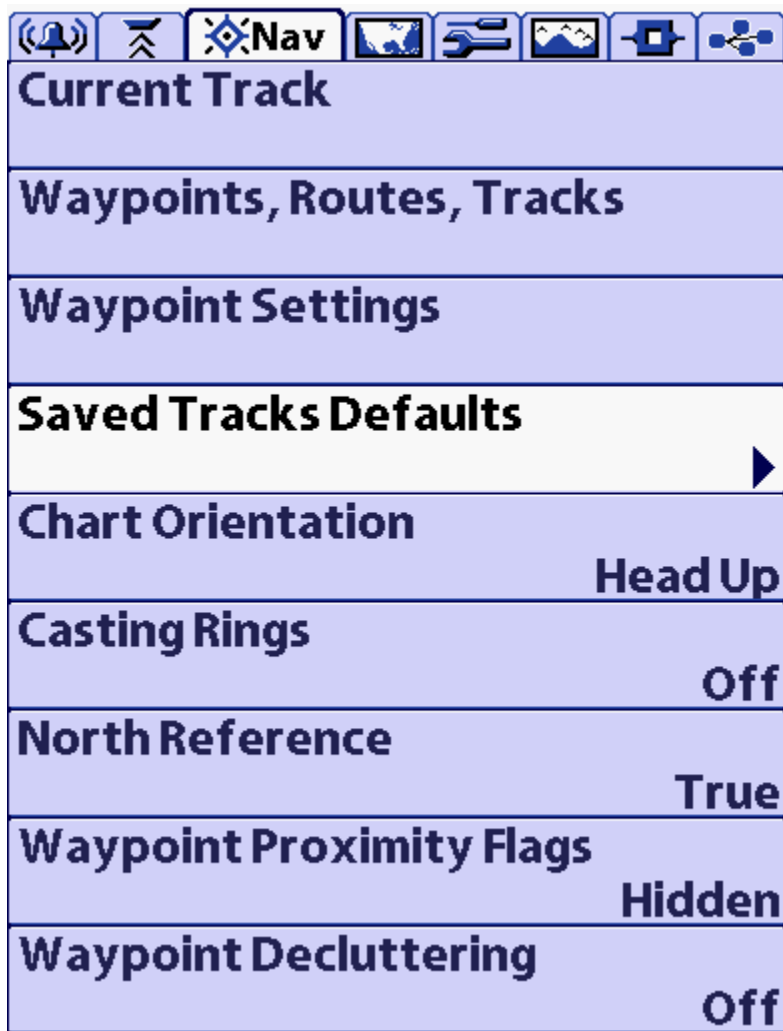
**All changes made in Full Simulator Mode will be saved and maintained when unit is booted into Normal on-the-water operation mode**

### CHANGING SAVED TRACKS DEFAULTS:

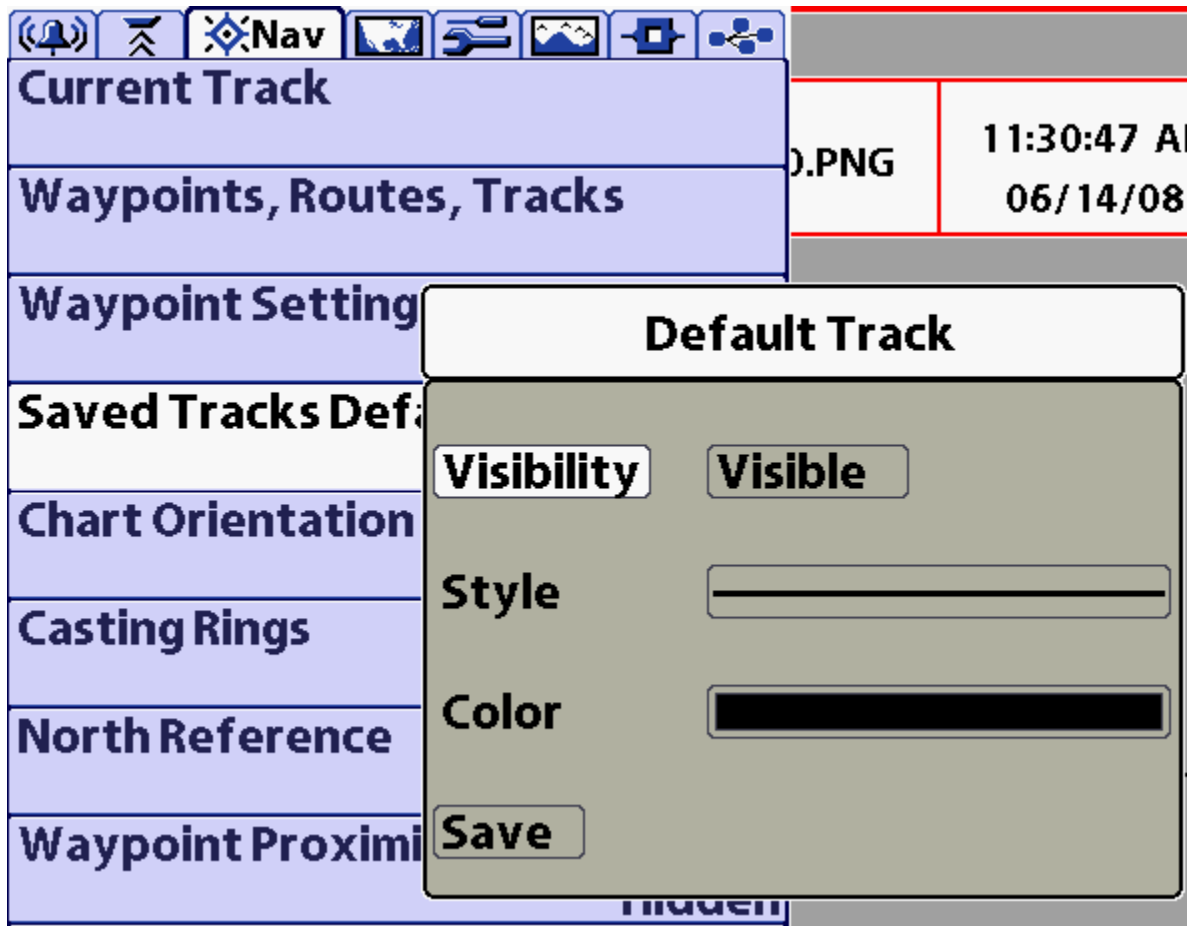
Humminbird tracks by default will display as small dotted lines that are difficult to view for navigation. We recommend you change Humminbird's **Saved Tracks Defaults**.

You must do this BEFORE you upload Boatlanes. Saved Tracks Defaults characteristics will only apply to new HB tracks when they are being uploaded. Existing HB tracks would need to be edited, see **Editing Humminbird Tracks** section below.

1. Press MENU KEY twice from any HB screen.
2. Arrow Over to select NAV TAB, then Arrow Down to select Saved Tracks Defaults:



3. Arrow Over to select the Default Track Edit box:



Use Arrow keys to change Style and Color characteristics to desired settings.

We recommend Solid-Bold line and Color = Black.

Use Arrow keys to Save.

4. Press Exit Button until you are returned to a HB screen.

Now you are ready to import BoatLanes navigation data into your Humminbird unit.

**IMPORTING HUMMINBIRD BOATLANES:**

1. Insert Boatlanes SD-card carefully into your HB unit's SD-card slot.
2. The Upload Nav Data from SD card Confirm Box should display.  
Use Arrow-key to select YES.
3. Wait for Boatlanes to load.

Boatlanes should now be uploaded into your HB unit's memory and you can remove the SD-card. You can view the Boatlane tracks and waypoints on your map screen when viewing the lake loaded.

**PLEASE NOTE: Some of the trails are "guide lanes" and are not marked with official buoys. . . You should only navigate using these trails with EXTREME CAUTION and do so AT YOUR OWN RISK!!!!**

Some HB settings you might wish to edit under the Nav Tab menu are:

Chart Orientation(default is North-Up): Set to Head-up or Course-up.

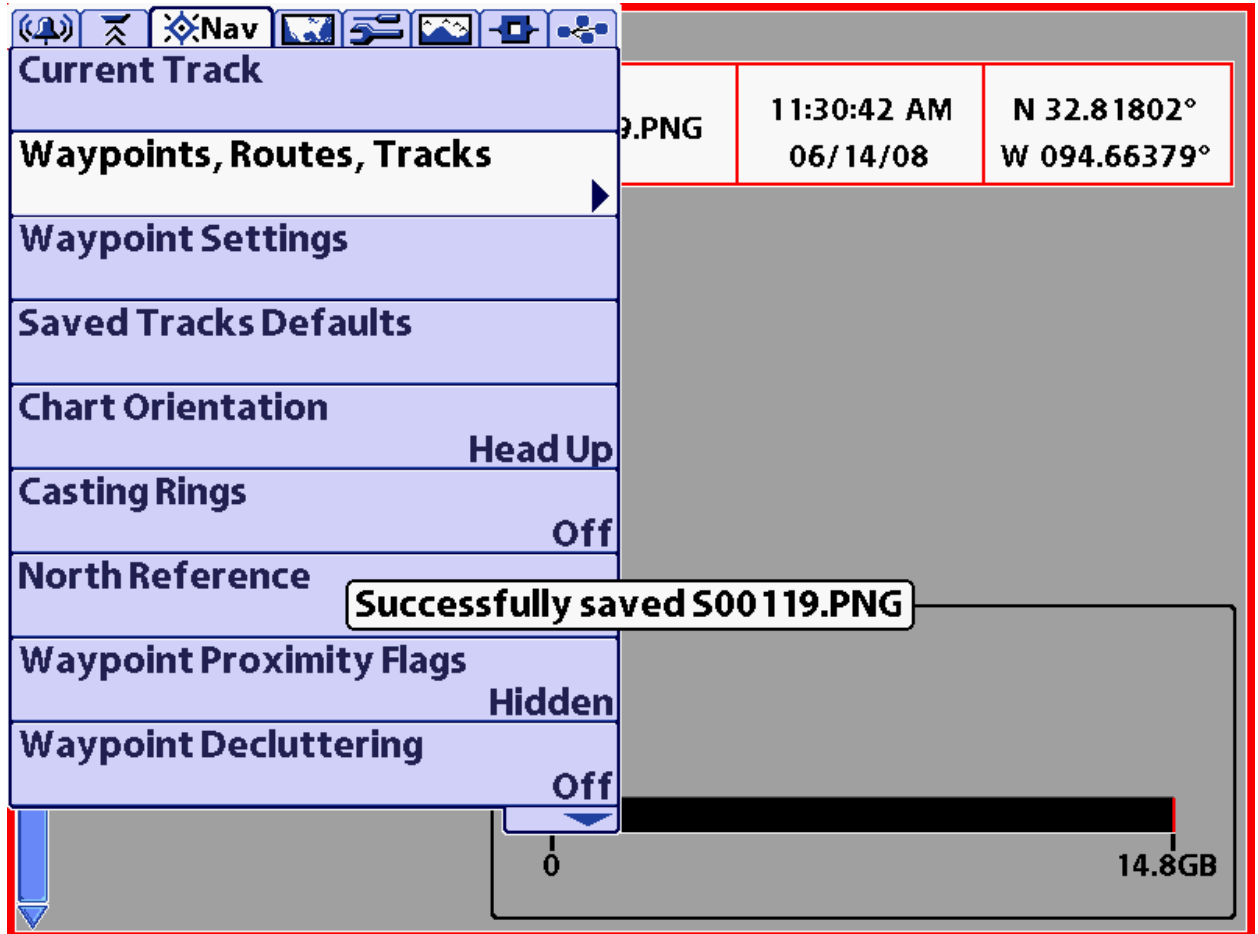
Waypoint Decluttering(default is ON): Set to OFF.

HB Tip: Use Zoom-Level of 200ft, 500ft or 1000ft on map screen when running as desired.

## EDITING HUMMINGBIRD TRACKS:

You can edit existing HB Track Characteristics:

1. Press MENU KEY twice from any HB screen.
2. Arrow Over to select NAV TAB, then Arrow Down to select Waypoints, Routes, Tracks:



3. Arrow Over to open the Waypoints, Routes, Tracks dialog box:  
Tracks will appear at top of list when sorted by icon.  
Arrow Up to Sort By  
Arrow Over until Icon is selected.  
Now tracks should be listed first:

**Waypoints, Routes, Tracks**

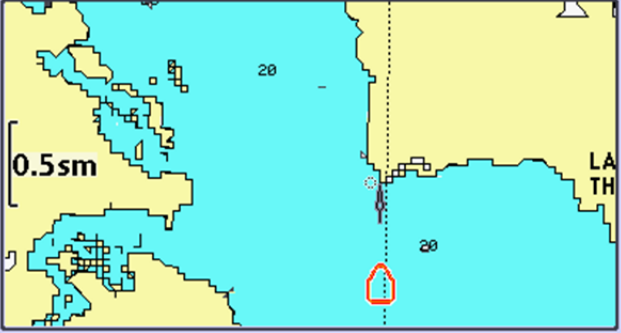
Sort By

Options

- LOPBigCypress
- LOPBoatLanes
- LOPBoatLanesX
- LOPROADBEDS
- +
- +
- +
- +
- +
- +

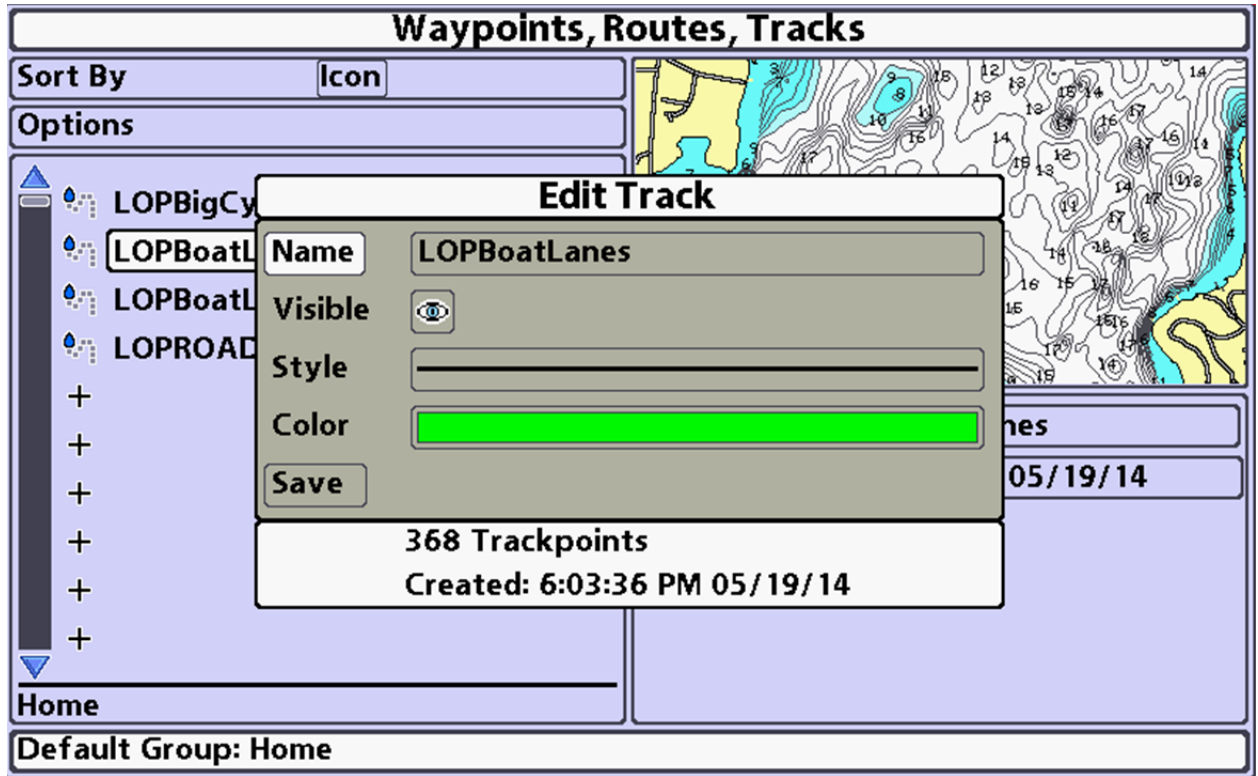
Home

Default Group: Home



Select An Item To View Information

4. Arrow to select track to edit, Arrow Over to select and Edit Track Box will display:



Here you can edit to change Track Characteristics as desired.

We recommend Boatlane tracks be changed:

Style: Solid Bold Line

Color: Black (or color you desire).

Arrow to select Save, then Arrow Over to Save.

5. Press Exit Button until you return to a HB screen.